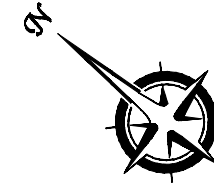


33 Richmond Court,
Sloane Street, SW1X
Approximate Gross Internal Area
61.57 sq m / 663 sq ft



(CH = Ceiling Heights)

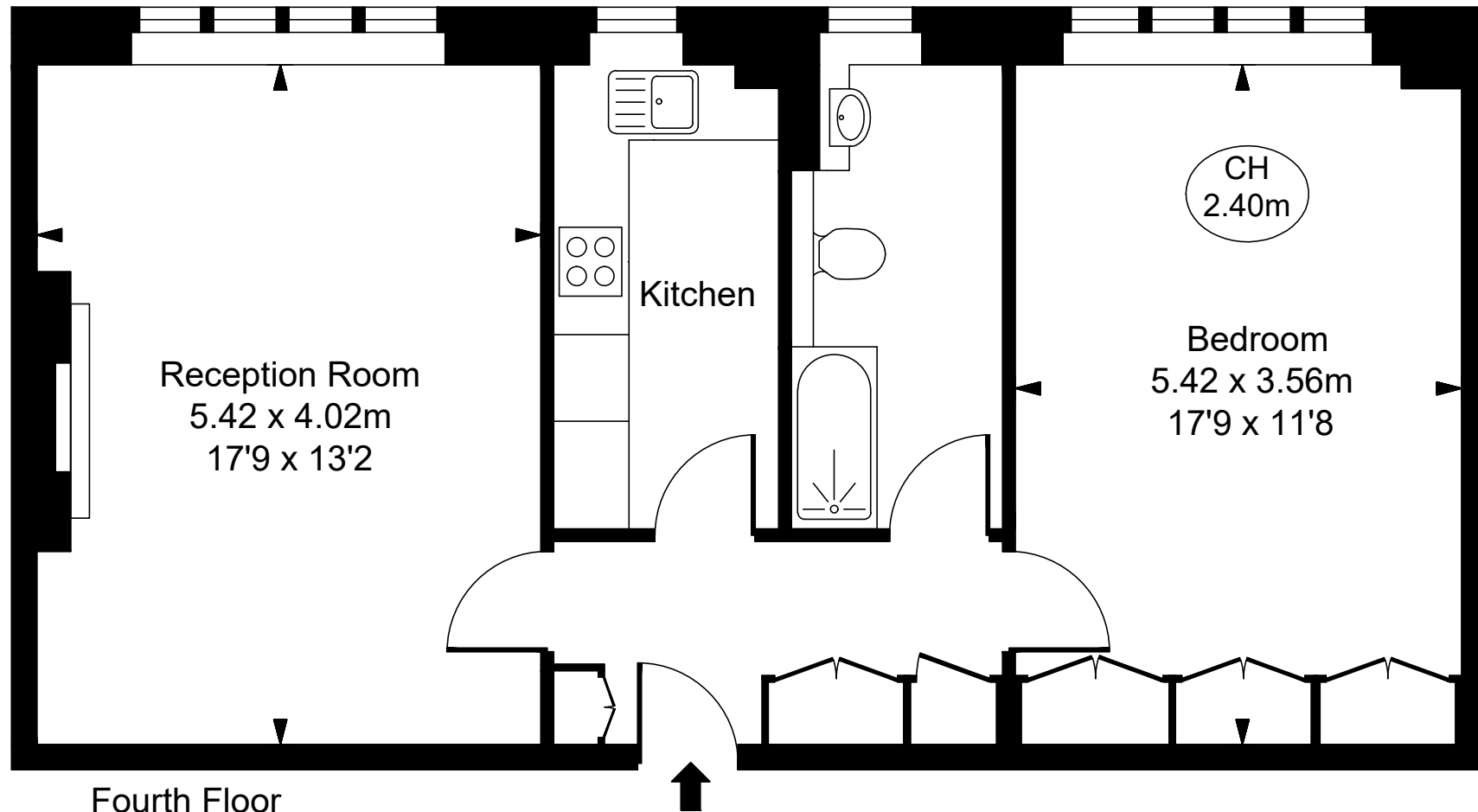


ILLUSTRATION FOR IDENTIFICATION PURPOSES ONLY
ALL MEASUREMENTS ARE MAXIMUM, AND INCLUDE WINDOW BAYS AND WARDROBES WHERE APPLICABLE
THIS PLAN MUST NOT BE REPRODUCED BY ANY OTHER PERSON WITHOUT PERMISSION