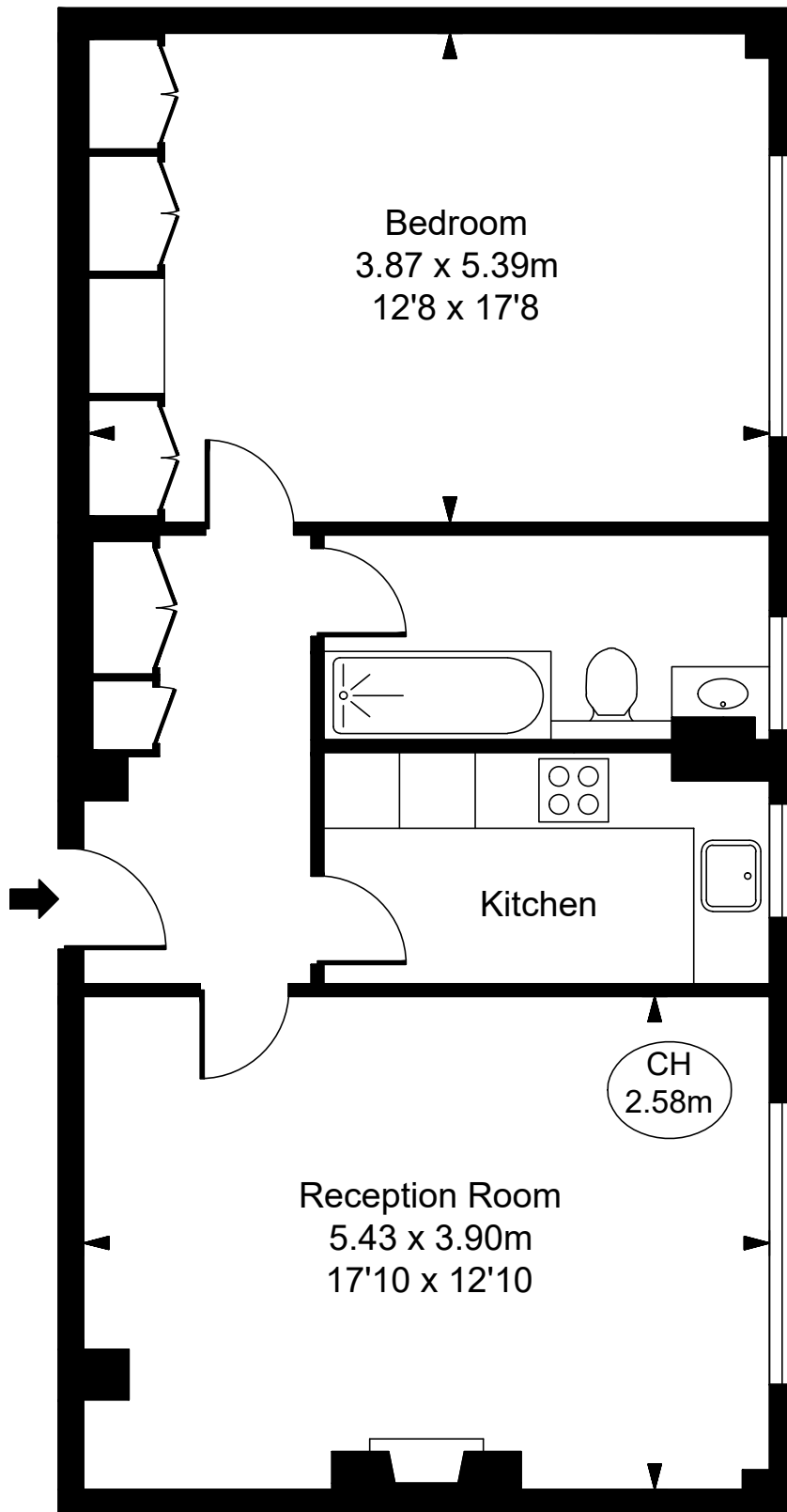


40 Richmond Court,  
Sloane Street, SW1X  
Approximate Gross Internal Area  
62.55 sq m / 673 sq ft  
( CH = Ceiling Heights )



Fifth Floor

ILLUSTRATION FOR IDENTIFICATION PURPOSES ONLY  
ALL MEASUREMENTS ARE MAXIMUM, AND INCLUDE WINDOW BAYS AND WARDROBES WHERE APPLICABLE  
THIS PLAN MUST NOT BE REPRODUCED BY ANY OTHER PERSON WITHOUT PERMISSION