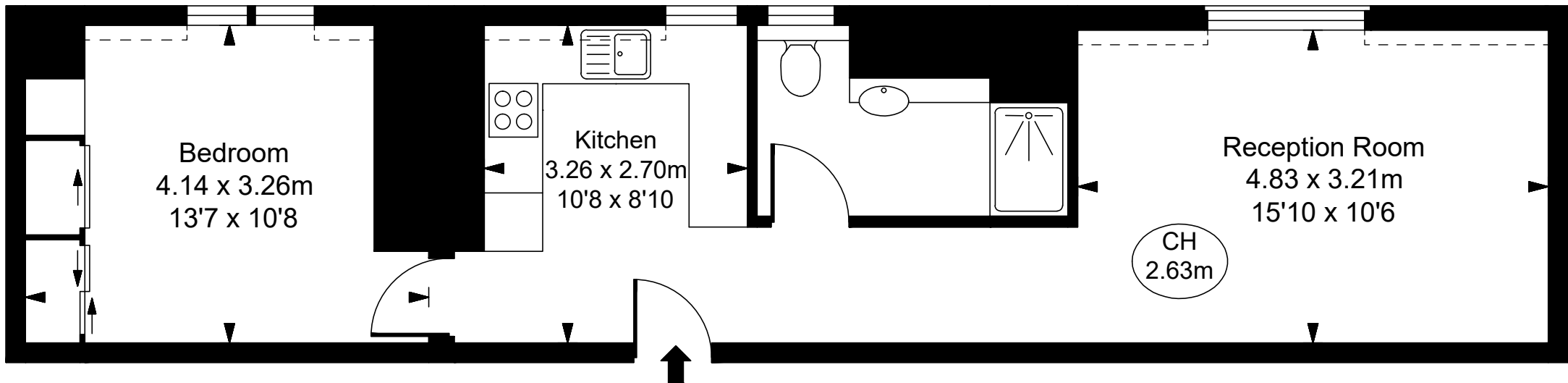


67 Richmond Court,
200 Sloane Street, SW1X 9QU

Approximate Gross Internal Area
50.60 sq m / 545 sq ft

(Including restricted height
under 1.5m [- - - -])

(CH = Ceiling Heights)



Seventh Floor

This plan is not to scale. It is for guidance and not for valuation purposes.
All measurements and areas are approximate only, and have been prepared in accordance with the current edition of the RICS Code of Measuring Practice.
© Fulham Performance