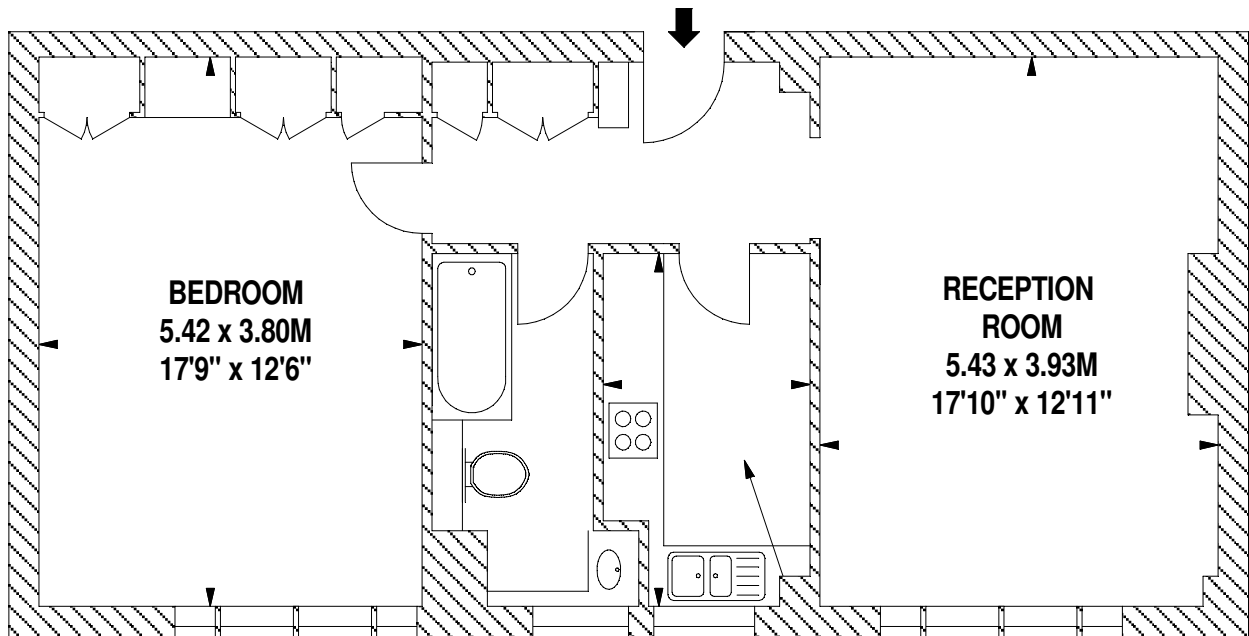
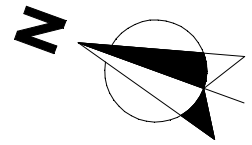


Flat 15
Third Floor
Richmond Court,
Sloane Street, SW1
Approximate gross internal area
64 sq m / 689 sq ft



BEDROOM
5.42 x 3.80M
17'9" x 12'6"

RECEPTION ROOM
5.43 x 3.93M
17'10" x 12'11"

KITCHEN
3.50 x 2.03M
11'6" x 6'8"

Sloane Street

Scale 1:75

Scale floor plans produced by Mays Floorplans © . Tel 020 3397 4594
All measurements are maximum, and include wardrobes and window bays where applicable