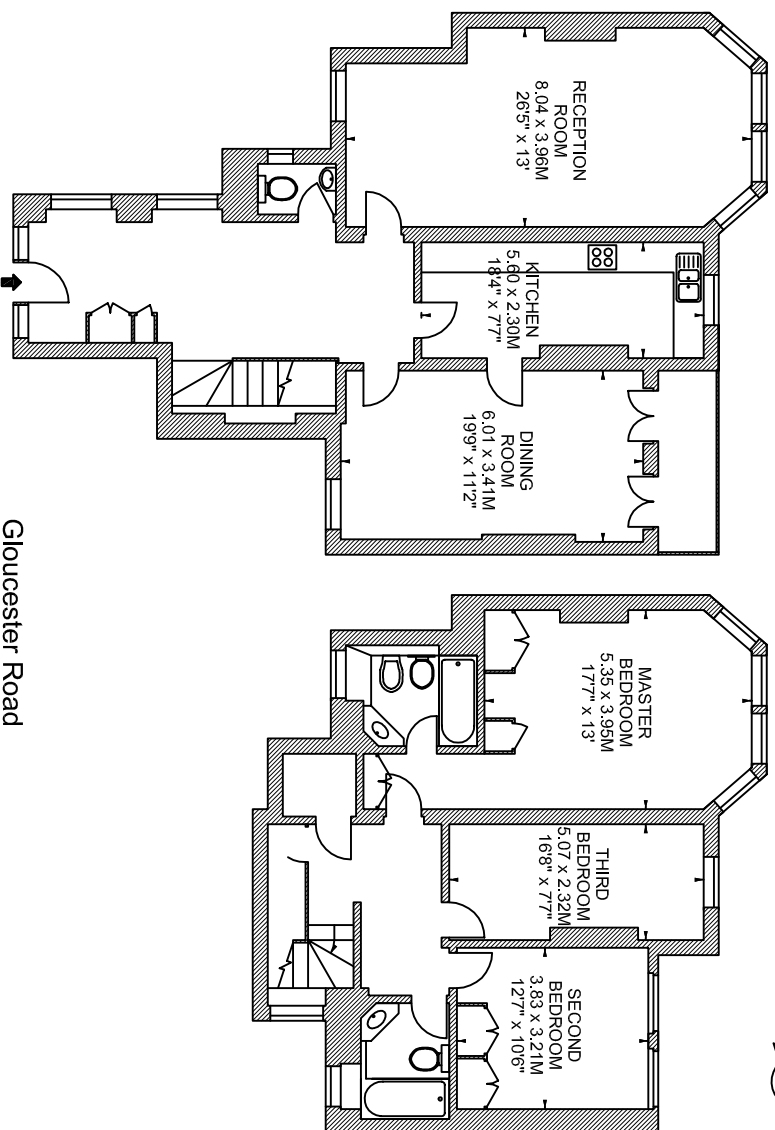


**Flat 11**  
**Lower Ground Floor**  
**Ground Floor**  
**St. George's Court,**  
**Gloucester Road, SW7**

Approximate gross internal area  
167 sq m / 1798 sq ft



**Gloucester Road**

Scale 1:150

Scale floor plans produced by Mays Floorplans © . Tel 020 3397 4594  
All measurements are maximum, and include wardrobes and window bays where applicable